

Proceedings of the Ninth Workshop of the

Tropical Marine

Part 2

Mollusc

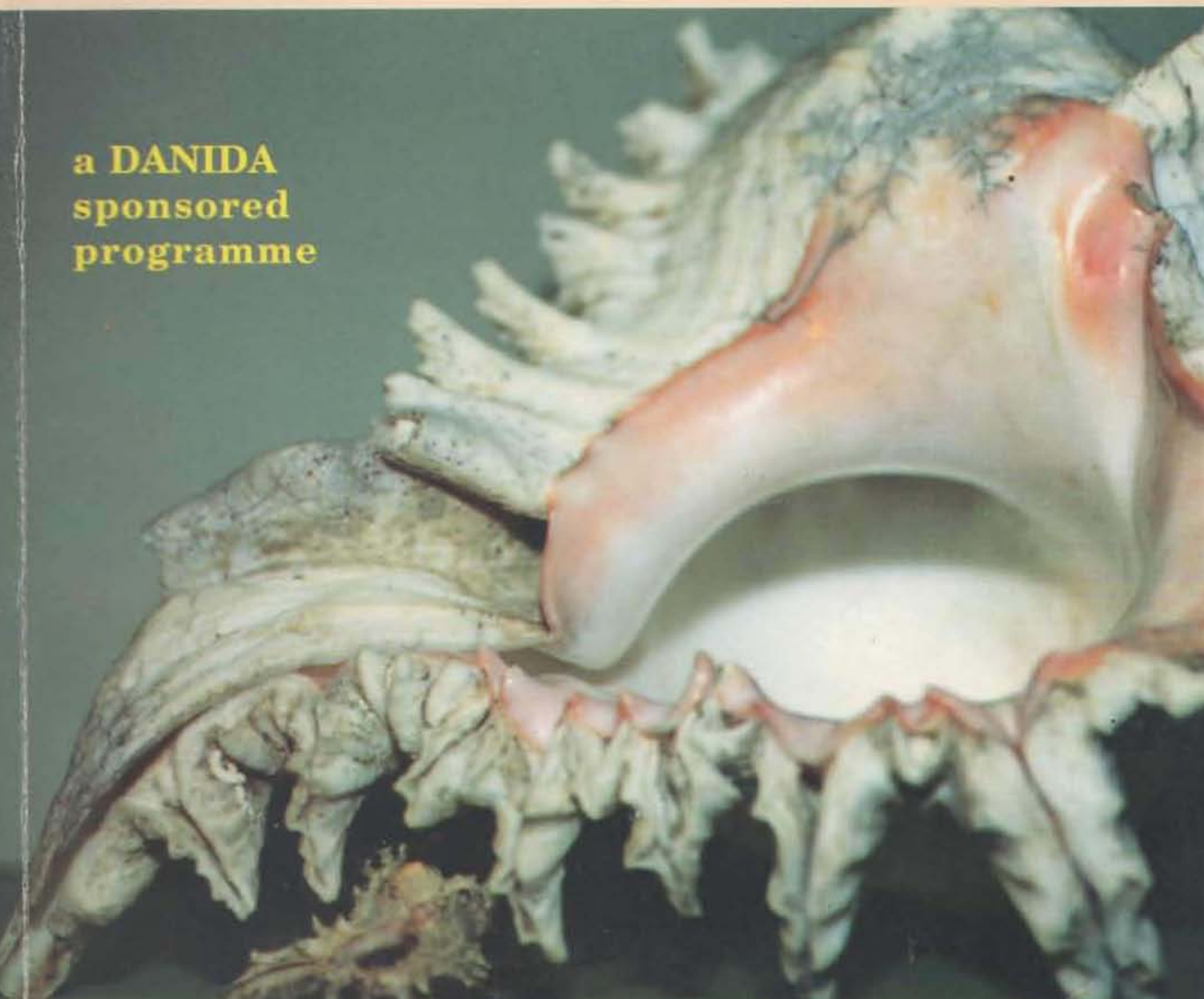
Programme (TMMP)



Lombok, Indonesia 19-29 August 1998

Hosted by LIPI in collaboration with 6 universities

a **DANIDA**
sponsored
programme



Proceedings of the Ninth Workshop

Handwritten signature and date:
CABD
Feb. 2000

of the

Tropical Marine Mollusc Programme (TMMP)

Indonesia 19-29 August 1998

Hosted by

LIPI in collaboration with

IPB, UNRAM, UNSRAT, UNHAS, and UNPATTI



LIPI



IPB



UNSRAT



UNHAS



UNDIP

Editor of the TMMP Proceedings
Prof Dr Jorgen Hylleberg, Denmark

Assistant editors
Dr Anuwat Nateewathana, Thailand
Cand. scient. Michael Bech, Denmark

Advisory editorial board
Director Praween Limpsaichol, PMBC Thailand
Prof Dr Barbara Brown, University of Newcastle UK
Ms Tipamat Upanoi, PMBC Thailand

CO-OPERATING INSTITUTIONS
of the Tropical Marine Molluse Programme (TMMP)

(Alphabetical order according to countries)

Australia

- Australian Museum, Sydney
- Australian Institute of Marine Sciences, Queensland
- Museum of Victoria
- The Flinders University of South Australia, Adelaide
- Western Australian Museum, Perth

Belgium

- Laboratoire de Bio-Ecologie, Faculte des Sciences, Universite Libre de Bruxelles, Brussels

Cambodia

- Department of Fisheries

Denmark

- Aarhus University: Department of Marine Ecology & Department of Zoophysiology
- Copenhagen University: Zoological Museum & Marine Biological Laboratory, Elsinore
- Danish Institute for Fisheries Research, Chalottenlund

France

- Museum National d'Histoire Naturelle

Hong Kong China

- Open Learning Institute of Hong Kong

Iceland

- Marine Research Institute, Reykjavik

India

- Suganthi Devadason Marine Research Institute, Tuticorin

Indonesia

- IPB, Agricultural University of Bogor, Java
- LIPI, Indonesian Institute of Sciences, Jakarta
- UNDIP University of Semarang, Java
- UNHAS, Hasanuddin University, Ujung Pandang, Sulawesi
- UNPATTI, University of Pattimura, Ambon
- UNRI, University of Riau, Sumatra
- UNSRAT, Sam Ratulangi University, Manado, Sulawesi

Japan

- University of Ryukyus: Department of Marine Sciences

Malaysia

- Universiti Sains Malaysia: Centre for Marine and Coastal Studies, Penang

Philippines

- SEAFDEC, Iloilo
- ICLARM, Manila

Singapore

- The National University of Singapore

Sweden

- Royal Swedish Academy of Science: Kristineberg Marine Biological Station

South Africa

- Natal Museum

Taiwan

- Institute of Marine Biology, National Sun Yat-Sen University

Thailand

- Department of Fisheries: Museum and Aquarium Division
- Department of Fisheries: Phuket Marine Biological Center
- Department of Fisheries: Phuket Coastal Aquaculture Development Center
- Department of Fisheries: Prachuap Khiri Khan Coastal Aquaculture Development Center
- Department of Fisheries: Ranong Coastal Aquaculture Station
- Department of Fisheries: Rayong Coastal Aquaculture Station
- Department of Fisheries: Samut Sakorn Coastal Aquaculture Development Center
- Department of Fisheries: Turtle Conservation Station, Koh Man Nai
- Kasetsart University: Department of Marine Science
- Walailak University, Nakhon Si Thammarat

U.K.

- British Museum (Natural History)

U.S.A.

- California State University: Department of Biological Sciences
- University of Washington

VIETNAM

- Ministry of Fisheries: Research Institute of Aquaculture No. 1, Hanoi • • Ministry of Fisheries: Research Institute of Aquaculture No. 3, Ho Chi Minh City
- Ministry of Fisheries: Research Institute of Aquaculture No. 3, NhaTrang
- Ministry of Fisheries: RIMP Haiphong
- Institute of Oceanography, NhaTrang
- Vietnam National University, Ho Chi Minh City
- Cantho University
- University of Fisheries, Nha Trang

TABLE OF CONTENTS

Part 1

Co-operating Institutions	iii
Editorial	v
Table of Contents.....	vii
Jorgen Hylleberg: General Conclusions: The 9th TMMP Congress and Workshop	1
Rectification of Printer's Error in Paper By Vibeke Simonsen.....	11

ADDRESSES

Chairperson of the Organizing Committee, Woro Widiarsih Kastoro: Welcome to Lombok	13
Deputy Chairman for Natural Science, The Indonesian Institute of Science, Anugrah Nontji: Marine Resources and Environments of Indonesia	14
Programme Director of the TMMP, Jorgen Hylleberg: Outlook on the Occasion of the 9th Workshop of the TMMP.....	17
Governor of the West Nusa Tenggara Province, H. Warsito SH.: Opening Address on the Occasion of the Ninth International Workshop of the TMMP.....	20

ECOLOGY

Jaruwat Nabhitabhata & Pitiporn Nilaphat: Life Cycle of Cultured Pharaoh Cuttlefish, <i>Sepia pharaonis</i> Ehrenberg, 1831.....	25
Gudrun G. Thórarinsdóttir: Lifespan of Two Long-Lived Bivalves, <i>Arctica islandica</i> and <i>Panopea generosa</i>	41
Fredinan Yulianda: The Effect of Light on Hatching and Settling of Cultured Teredinid Larvae (<i>Teredo</i> Sp.).....	47
Le Duc Minh: Reproduction of <i>Haliotis asinina</i> Linnaeus in Nha Trang Bay, South Central Vietnam.....	51
Farnis B. Boneka, L.T.X. Lalamentik, & Delsy Cussoy: Feeding Niche of <i>Drupella</i> (Muricidae: Prosobranchia) in the Coral Reefs of Bunaken Island, Indonesia.	55
Gunarto Latama: Metamorphosis, Growth, and Survival of Top Shell Larvae (<i>Trochus niloticus</i>) in Cultures with Four Species of Microalgae.....	61
Eddy Soekendarsi: Gastropods Associated with Three Genera of Macroalgae.....	65
Peter Daugbjerg Jensen, Jens Tang Christensen & Donald J. Macintosh: Growth and Survival in the Mangrove Snail <i>Littoraria intermedia</i> (Philippi, 1846)....	69
Tan, Koh Siang: Seasonal Growth in Two Species of <i>Thais</i> (Mollusca, Gastropoda, Muricidae) on the East Coast of Peninsular Malaysia - A Preliminary Study..	75
Eva Blidberg, Tina Elfving & Michael Tedengren: Physiological Responses of the Fluted Giant Clam, <i>Tridacna squamosa</i> , Exposed to Decreased Irradiance and Reduced Salinity.....	85
Zulfigar Bin Yasin And Aileen Tan Shau-Hwai: Utilization of Dissolved Inorganic Nutrients of Zooxanthellae Cells of Tridacnid Clams.....	93
Gunarto Latama: The Effects of Colours of Light in Relation to Growth and Survival of Juvenile Giant Clam <i>Tridacna derasa</i>	99

Eddy Soekendarsi, M. Iqbal Djawad, Zulkarnain, Karunia Alie: Growth Rates of the Gastropod <i>Trochus niloticus</i> L. Fed Five Species of Macro-Algae.....	103
Nguyen Thi Xuan Thu & Nguyen Chinh: Reproductive Biology of <i>Chlamys nobilis</i> (Reeve) from Binh Thuan Province, Vietnam.....	107
R. Ramesh: Spawning and Larval Development of <i>Rapana rapiformis</i> (Born) (Mollusca: Gastropoda).	113
Ib Svane: On Some Statistical Problems in Marine Benthic Ecology.....	119
Kongkiat Kittiwattanawong: The Relation of Reproductive Modes to Population Genetic Differentiation in Marine Bivalves and Gastropods.....	129
A. Murugan, M. Niklasson, S. Bussarawit, C. Aungtonya, & F. Boneka: Allozyme Comparison of Black-Scar Oyster Populations of India, Thailand and Malaysia.	139
Isdradjad Setyobudiandi, Muhammad Alifuddin, Mayariana Krisanti & Hefni Effendie: Bacteria in Green Mussel <i>Perna viridis</i> (L.) and Its Environment..	145
Michael Bech: Sensitivity of Different Muricid Gastropods to Tributyltin Contamination.....	151
Ake Granmo: Use of Caged Mussels to Detect Environmental Effects of Pollutants	157
Markus T. Lasut: Effects of Salinity-Cyanide Interaction on the Mortality of Abalone <i>Haliotis varia</i> (Haliotidae: Gastropoda).....	165
Markus T. Lasut & James Paulus: Effects of Exposure to Water-Soluble Fractions of Lubricant Oil (Mesran Sae 40 W) on Attachment Force of The Snail <i>Littoraria scabra</i> (Littorinidae: Gastropoda).....	169
Sunan Tuaycharoen: Distribution of Razor Clams in The Gulf of Thailand.....	173
Vo Si Tuan: Growth, Reproduction and Fishery Biology of the Bivalve <i>Anadara antiquata</i> in South Vietnam.....	177
Nguyen Chinh: Checklist of Marine Molluscs of Economic Value in Vietnam.....	181

AQUACULTURE

Nguyen Nhu Tri & Chang Kwei Lin: Mollusc Culture System and Environmental Conditions in Can Gio District, Ho Chi Minh City, Vietnam.....	185
Nguyen Thi Xuan Thu: Suspended Culture of the Noble Scallop (<i>Chlamys nobilis</i> , Reeve 1852) in Vung Ro, Central Vietnam.....	191
Tipaporn Traithong & Kanchanee Promjinda: Total Production Costs of the Scallop <i>Chlamys senatoria</i> Gmelin Cultured in Prachuap Khiri Khan, Thailand.....	197
Touch Seang Tana & Khy An: Pole Culture of Green Mussel <i>Perna viridis</i> in Koh Kong Bay, Cambodia.....	203
Suparp Pripanapong: The Condition Factor of Oyster, <i>Crassostrea belcheri</i> at Khoa Yoa Bay, Ranong Province.....	209
Sigit A.P. Dwiono & D.E. Djoko Setyono: Influence of Density on the Growth Rate of Green Snail, <i>Turbo marmoratus</i> L. (Mollusca; Gastropoda) in Cages..	213
Aileen Tan Shau-Hwai & Zulfigar Bin Yasin: Depuration of Oysters (<i>Crassostrea spp.</i>) Using Ultra-Violet Radiation.....	219
Edward Danakusumah: Studies on the Biology and Culture of the Neritic Squid <i>Sepioteuthis lessoniana</i> Lesson: Effects of Stocking Density on Survival Rate	223

MANAGEMENT AND CONSERVATION BIOLOGY

V. Krishnamurthy & R. Soundararajan: Conservation of <i>Trochus</i> and <i>Turbo</i> in Andaman Waters.....	229
Jens Hagelskjaer & Jintana Nugranad: Predation and Mortality in a Restocking Programme With <i>Tridacna squamosa</i> Lamarck, 1918.....	235

ABSTRACTS

Farnis B. Boneka: Common Prosobranchia in Northern Sulawesi: A Comparison between Inhabitants of Reef Flat and Seagrass Bed.....	243
Somchai Bussarawit: Taxonomic Study on Two Rock Oysters of the Genus <i>Saccostrea</i> in Thailand.....	243
Tomas Cedhagen: Shell Colour Polymorphism in <i>Bulla ampulla</i>	244
Ha Le Thi Loc & Vo Si Tuan: Reproductive Biology of Black Lip Pearl Oyster <i>Pinctada margaritifera</i> in Khanh Hoa Province, Vietnam.....	244
Alan J. Kohn: Snail Spears And Scimitars: The Structure and Function of <i>Conus</i> Radula Teeth.....	244
Kathe R. Jensen & K. Padmakumar: Description of Three Species of <i>Elysia</i> (Opisthobranchia, Sacoglossa) from Southern India. With a Discussion of the Identity of <i>E. grandifolia</i> Kelaart, 1858.....	245
Alan J. Kohn: Biology and Molluscs of Coral Reefs.....	246
Anuwat Nateewathana: The Sepiidae (Cephalopoda) of Thailand.....	246
Nguyen Thi Bich Ngoc & Nguyen Thi Xuan Thu: Isolation and Maintenance of Stock and Mass Culture of Microalgae for Larviculture of Molluscs.....	247
Jintana Nugranad, Tipaporn Traithong & Kanchanee Promjinda: Hatchery Seed Production of Gold-Lipped Pearl Oyster <i>Pinctada maxima</i> (Jameson).....	247
Jintana Nugranad, Tipaporn Traithong & Tanate Poomtong: Nursery of the Giant Clam <i>Tridacna squamosa</i> in Koh Tao, Gulf of Thailand.....	248
Shelly M. Pattipeiluhu & Sedercor Melatunan: Induced Spawning of Abalone <i>Haliotis asinina</i>	248
Pham Van Thorn & Vo Si Tuan: Preliminary Studies on the Relationship between Environmental Conditions and Distribution of Some Bivalves in the Coastal Waters of South Vietnam.....	249
Tanate Poomtong, Jintana Nugranad & Songchai Sahavacharin: Optimal Sperm Density for Fertilization in the Abalone <i>Haliotis asinina</i> Linne.....	249
David G. Reid: The Evolution and Biogeography of the Patellid Limpets.....	249
Eugenius A. Renjaan & Donny Patisamallo: Tidal Flushing Influence on Dispersion and Abundance of Bivalve and Gastropod Larvae in the Un Estuary, Kei Islands Southeast Maluku.....	250
Sanchai Tandavanitj, Vaiyapoch Kruasanae & Michael Bech: Growth Rate Study of Topshell <i>Trochus niloticus</i> Reared in Fish Tanks.....	250
Pitiwong Tantichodok: The Detritus Story.....	251
Tipamat Upanoi & Surapong Banchungmanee: Distribution and Abundance of Giant Clams in The Adang-Rawi Island Group, The Andaman Sea, Thailand	251

NINTH CONGRESS & WORKSHOP OF THE TROPICAL MARINE MOLLUSC PROGRAMME CONCLUDED

Participants and Observers.....	255
Jorgen Hylleberg: Activities and Decisions: The 9 th Congress & Workshop 19-29 August 1998, Lombok, Indonesia.....	257
Jorgen Hylleberg: Status Report 1998. The Third Year of the Third Phase of the Programme.....	269
Acknowledgements.....	281

Part 2

Co-operating Institutions.....	iii
Editorial.....	v
Table of Contents.....	vii

BIODIVERSITY

David G. Reid: The Phylogeny of <i>Littoraria</i> (Gastropoda: Littorinidae): An Example of the Practice and Application of Cladistic Analysis.....	283
Bernard Tursch, Dietmar Greifeneder & Ralph Duchamps: A Long Neglected Problem: Separating <i>Oliva vidua</i> (Röding, 1798) from <i>O. elegans</i> Lamarck, 1811.....	323
Aloysia Murni Shintosari, Fir Abdurrahman, & Wisnu Wardhana: Gastropods on Reef Flats at Penjaliran Barat Island, Jakarta Bay.....	341
Kathe R. Jensen: Collection, Preservation and Identification of Opisthobranch Molluscs.....	345
Jacques Vidal: Reflections on the Distribution of Polytypic Species of the Genus <i>Vasticardium</i> (Mollusca, Cardiidae) from the Indo-Pacific.....	353
Wantana Yoosukh & Teerapong Duangdee: Living Oysters in Thailand.....	363
Charatsee Aungtonya & Dongjan Srisuwan: Recent Records of Bivalvia in the Reference Collection of Phuket Marine Biological Center, Thailand.....	371
Gustaf N. F. Mamangkey & Terry L. Kepele: New Records of Teredinidae (Bivalvia: Pholadacea) from Northern Sulawesi, Indonesia.....	385
Nguyen Chinh: Species of the Bivalve Family Pteriidae Commonly Found in Vietnamese Waters.....	391
Vararin Vongpanich: A Rectification of an Erroneous Record of <i>Anadara mosambicana</i> (Bianconi, 1850) from The Gulf of Thailand.....	395
Jorgen Hylleberg: Molluscs From Beaches on Bali, Lombok, Sumbawa, and Komodo Islands, Indonesia.....	397
Hua Thai Tuyen: Checklist of Marine Molluscs of Con Dao National Park, Vietnam	403
Somchai Bussarawit, Andrew Davison & Charatsee Aungtonya: The Design of The PMBC Reference Collection Database.....	407
J. Knudsen & J. Hylleberg: The Species Described By Lorentz Spengler in His "Over Den Toskallede Slaegt Hiertemuslingen, <i>Cardium</i> Linnéi", In 1799. A Translation into English.....	413
Anuwat Nateewathana & Mark D. Norman : On Three New Species of Ocellate Octopuses (Cephalopoda : Octopoda) from Thai Waters.....	445

BACTERIA IN GREEN MUSSEL *PERNA VIRIDIS* (L.) AND ITS ENVIRONMENT

Isdradjad Setyobudiandi, Muhammad Alifuddin, Mayariana Krisanti, Hefni Effendie,
Yusli Wardiatno and Rini Ratnasetiyati
Faculty of Fisheries and Marine Sciences, Bogor Agriculture University,
Darmaga, Bogor 16680

ABSTRACT

Pathogenic bacteria and bacterial indicators were isolated from green mussel and sea water collected at Muara Kamal, Jakarta Bay.

Samples were collected at five lift-nets on two occasions in 1997. Two size classes of mussels (< and > 5 cm shell length) were analysed. Higher number of *Shigella* sp. and *Escherichia coli* but not *Salmonella* sp. and *Vibrio* sp. were found in large mussels. Counts of *E. coli* were higher in large mussels ($24 \cdot 10^3$ MPN 100 g⁻¹) compared to small mussel ($16 \cdot 10^3$ MPN 100 g⁻¹) and sea water ($13 \cdot 10^3$ MPN 100 ml⁻¹). The number of *Salmonella* in small and large mussel were $11.6 \cdot 10^{12}$ and $0.2 \cdot 10^{12}$ cfu 100 g⁻¹ respectively. *Salmonella* sp. occurred in 10 % of the sea water samples. The number of *Shigella* sp. in small and large mussel were $4.2 \cdot 10^{13}$ cfu 100 g⁻¹ and $2.6 \cdot 10^{13}$ cfu 100 g⁻¹ respectively. *Shigella* was recorded in sea water at concentrations of $14.9 \cdot 10^2$ cfu 100 ml⁻¹. *Vibrio* sp. were rare in mussels, less than 30 cfu 100 g⁻¹. Sea water contained $1.0 \cdot 10^3$ cfu 100 ml⁻¹.

INTRODUCTION

Jakarta Bay is the recipient of discharges from 13 rivers, which have caused a decrease in water quality and biodiversity because of the discharge of sewage (Anonymous, 1998). The decrease in the water quality would also affect the quality of green mussel, which are cultured in net-pouches hung in lift nets, especially in the western part of the bay. Mussels are usually sold or consumed by local people in spite of the fact that they are likely to serve as vectors of any water borne disease or contaminant they can take up from polluted water.

Sewage discharges typically contain pathogenic bacteria, which are concentrated by marine filter feeders. Shumway in Gosling (1992) mention that *Mytilus edulis* may be the vector of bacterial and viral contaminants, such as *Vibrio haemolyticus*, *Klebsiella pneumonia*, *Enterobacter* spp., *E. coli*, *Shigella dysenteriae*, *Yersinia enterocolitica*, *Hepatitis virus A*, *Citrobacter*, *Salmonella*, *Proteus*, *Streptococcus faecalis*, *Salmonella anatum*, *Bacillus subtilis*,

Serratia marcescens, *Aeromonas hydrophila*. Furthermore, the mussel *Perna canaliculus* may bear viral contaminants including Coxsackie virus BY, CBS virus, and polio viruses 1, 2, and 3.

Hasan *et al.* (1996) studied bacterial content of various marine species but in general very little is known about this problem in Indonesian waters. We have studied green mussel from Jakarta Bay to detect if they contain bacteria, which could be related to discharge of sewage. The result may assist authorities working with potential health problems.

MATERIAL AND METHODS

This research was conducted at 5 lift nets located at Muara Kamal, Jakarta Bay ($106^\circ 42' - 106^\circ 46' E$ and $04^\circ 08' - 06^\circ 08' S$). The distance between the nets was 60 m. The nets were located 4 km from the beach and adjacent to the estuary of Cikamal river (Figure 1). Sea water and mollusc were sampled on 26 October and 15 November

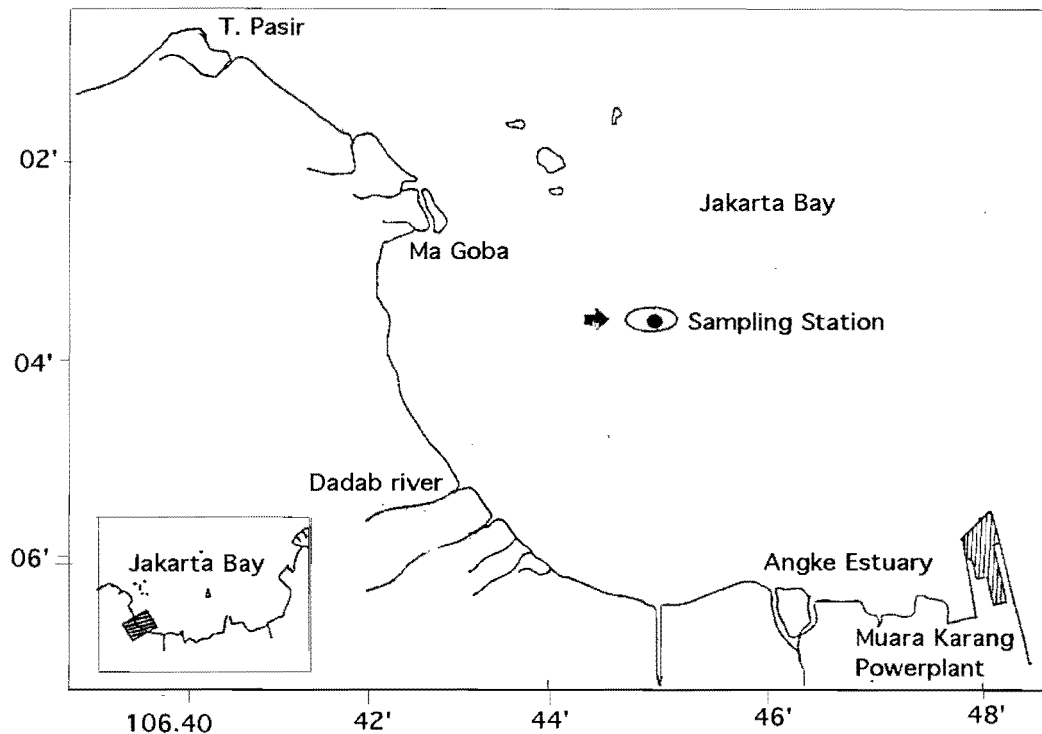


Figure 1. Sampling station in Jakarta Bay.

1997. The bacteria were isolated and identified in the laboratory of Fish's Health Department of Aquaculture Faculty of Fisheries and Marine Sciences, Bogor Agricultural University.

Water and mussel sampling

One green mussel < 5 cm and one mussel > 5 cm were taken at random from each lift net containing mussel at sizes ranging from 3-9 cm length.

Mussels were washed in sterilised physiological solution and kept in a closed sterilised container. Temperature, salinity, pH and soluble oxygen were measured in sea water, which was sampled in a 60-ml sterilised bottle. The samples were transported to the laboratory in a Styrofoam box filled with ice. All flesh of the mussel, except the mantle, was separated from the

shell and weighed. It was ground in a sterilised mortar after addition of distilled water (flesh: water ratio 1:10). This suspension was stored in a sterilised bottle and kept at 1 °C. Sea water samples were stored the same way.

Identification of bacteria

E. coli was isolated using the liquid media, Lauryl Tryptose Broth (LTB) and Eosin Methylene Blue-Agar (EMB) (SNI, 1991). *Salmonella* and *Shigella* were cultured in Selenite Cystine Broth (SCB) and in Salmonella Shigella-Agar (SS-Agar) (SNI, 1991). *Vibrio* spp were isolated using Thiosulphate Citrate Bile Salt Sucrose Agar (TCBS Agar) (AOAC, 1975). Bacteria identification was based on morphological characteristics, gram staining, shape of bacteria, and biochemical testing according

to Cowan and Steel.

Enumeration of bacteria

The number of *E. coli* was calculated using the Most Probable Number MPN (APHA, 1976). The number of *Salmonella* sp., *Shigella* sp., and *Vibrio* sp., was calculated using the spreading bowl method (Hadioetomo, 1993).

Data analysis

Two-way non-parametric statistics was used to identify the difference in bacterial concentration (Barnard *et al.* 1993). Bacterial numbers were analysed with respect to sampling time, size of mussels, and different concentrations in mussels and water sample. Comparison were made of bacterial concentration in mussels < 5 cm shell length to mussels > 5 cm; bacterial concentration in mussels < 5 cm shell length to bacterial concentration in sea water; bacterial concentration in mussels > 5 cm shell length to bacterial concentration in sea water.

RESULTS

Water quality was normal with temperatures between 29.2-32.0 °C, salinity 31.0-33.0 ‰, pH 7.4-8.0, and dissolved oxygen 6.2 -7.0 ppm.

Escherichia coli, *Salmonella* sp., *Shigella* sp., and *Vibrio* spp. were isolated and identified. The average concentrations of the

bacteria are shown on Table 1.

E. coli were found in all mussel and sea water samples. Green mussels concentrate bacteria as a result of their filter-feeding. The average concentration in mussels <5 cm and >5 cm were $16 \cdot 10^3$ and $24 \cdot 10^3$ MPN 100 g^{-1} respectively. The concentration in sea water was $13 \cdot 10^3$ MPN 100 ml^{-1} . The concentration of *E. coli* in mussel < 5 cm was lower than in mussels > 5 cm ($P < 0.01$). The concentration of *E. coli* did not increase significantly with time in the mussels ($P > 0.05$). *E. coli* in water and mussels < 5 cm were not significantly different ($P > 0.05$) but significantly different for mussels > 5 cm ($P < 0.05$).

Salmonella sp. was present in all mussel samples but only in half of the water samples. The concentration in mussels >5 cm was not significant different from the concentration in mussels <5 cm ($P > 0.05$). Counts of *Salmonella* in mussels <5 cm were higher than in sea water ($P < 0.001$). The concentrations of *Salmonella* in October and November were not significantly different ($P > 0.05$).

Shigella sp was found in 95% of the mussels and 80% of the water samples. The concentration of *Shigella* sp was higher in mussels >5 cm than in mussels <5 cm ($P < 0.05$) and both concentrations were significantly higher than in sea water ($P < 0.0001$). The values in October and November did not differ significantly

Table 1. Average bacterial concentrations (MPN 100 g^{-1}) in mussel and sea water (MPN 100 ml^{-1}) at Muara Kamal, Jakarta Bay (n=5)

Sampling	Bakteria	Sample		
		Size < 5 cm	Size > 5 sm	Water
1	<i>E. coli</i>	2.3E+04	2.4 E+04	9.4 E+02
	<i>Salmonella</i> sp.	2.3 E+13	3.1 E+11	0.0 E+00
	<i>Shigella</i> sp.	8.2 E+12	1.8 E+12	2.5 E+03
	<i>Vibrio</i> sp.	0.0 E+00	00 E+00	4.7 E+02
2	<i>E. coli</i>	8.4 E+03	2.4 E+04	2.4 E+04
	<i>Salmonella</i> Sp	1.7 E+11	5.0 E+10	2.5 E02
	<i>Shigella</i> sp.	1.2 E+11	5.2 E+13	4.7 E+02
	<i>Vibrio</i> sp.	0.0 E+00	0.0 E+00	1.6 E+03

Table 2. Results of a two-way non-parametric rank testing of the bacterial data.

Comparison	H ₀	<i>E. coli</i>	<i>Salmonella</i>	<i>Shigella sp.</i>	<i>Vibrio sp.</i>
MA ¹⁾ - MB ²⁾	O ₂ > O ₁	p > 0.05	p > 0.05	p > 0.05	3)
	MB > MA	p < 0.01*	p > 0.05	p < 0.05*	
MA - water	O ₂ > O ₁	p < 0.01*	p > 0.05	p > 0.05	
	MA > water	p > 0.05	p < 0.001*	p < 0.001*	
MB - water	O ₂ > O ₁	p < 0.05*	p > 0.05	p > 0.05	
	MB > water	p < 0.05*	p < 0.001*	p < 0.001*	

All the sea water samples and half of the mussels contained few *Vibrio*. Both *Vibrio cholerae* and *V. parahaemolyticus* were isolated (morphological characteristics and biochemical tests). However, the counts of the two types of *Vibrio* were combined because the concentrations were very low (Table 1). The concentrations in October did not differ significantly from November ($P > 0.05$).

DISCUSSION

Bonadonna *et al.* (1990) in Gosling (1992). Thayib and Suhadi (1976) in Thayib and Listiawati (1977) states that high numbers of coliform bacteria are found in water close to the beaches, estuaries and islands of Jakarta Bay. However, *E. coli* can also be found in places far away from beaches. The rivers carry domestic waste with suspended feces containing *E. coli* from of a big number of people living in the subdistrict of Penjaringan, North Jakarta (7259 people km⁻², Anonymous, 1998). Yates (1992) found that coliform bacteria are released through human feces at an average concentration of 107 cells g⁻¹. Accordingly a positive correlation has been found between suspended particulate matter and coliform bacteria (for example Ruyitno and Thayib 1994).

This study indicates a lower concentration of *E. coli* in sea water (Table 1) compared with findings of Thayib and Suhadi (1976) in Thayib and Listiawati (1977). They recorded an average concen-

tration of $33 \cdot 10^3$ MPN 100 ml⁻¹. The concentration of *E. coli* in Jakarta Bay should be expected to decrease because of the implementation of the "Program Kali Bersih" aiming at getting clean water of rivers in Indonesia. The establishment of Waste Treatment Installation in many industries located along the watershed area has at least lessened the input of pollutants coming to the estuaries by rivers. However, the concentration of *E. coli* in sea water is still too high for fish culture in accordance with the Decree of Minister of Bureau for Population and the Environment the Republic of Indonesia. According to WHO it is also too high for water provided to recreational activities. Concentrations of *E. coli* should not be higher than 10³ MPN 100 ml⁻¹. Italian regulations require no more than $3.9 \cdot 10^3$ MPN 100 ml⁻¹ (Bonadonna *et al.* 1990 in Gosling 1992).

The concentrations of *Salmonella* was lower in Jakarta Bay than found by Hasan & Parlindungan (1996) in the water of Riau. The average concentration of *Salmonella sp.* in Rupert Strait was $9.3 \cdot 10^3$ cfu 100 ml⁻¹. *Salmonella* cannot survive long in sea water (Highsmith and Crow 1992; McKee and Wolf 1963 in Al Massawi *et al.* 1983). Our samples were taken 4 km from the nearest shore and the concentration of *Salmonella* in most mussel samples passed the standard of the Italian Regulation stating that content in fish product must be nil (Bonadonna *et al.*, 1990 in Gosling, 1992). It also passed the standard of nil *Salmonella* set by the

Bureau for Population and the Environment, the Republic of Indonesia. However, more intensive sampling is needed to ascertain the situation in Jakarta Bay. Three out of five mussels contained *Salmonella* sp; while none of the 5 water samples contained *Salmonella* in October. Buttiaux and Leurs 1953 (in Thayib 1991) found adaptation of *Salmonella* to environmental conditions. The growth curve of *Salmonella thypi* in sea water decreased drastically to begin with but after a period of 11 hours the bacteria started to increase again. According to Cook 1991 and Rowse & Fleet 1982 (in Cook 1991), most of the microorganism filtered by mussels can survive for as long as 28 days (Highsmith & Crow, 1992).

V. cholerae can quickly adapt and survive in sea water and estuaries (Liston 1973 in Barrow & Miller 1976; Pallitzer 1990 in Rodrich 1991). In addition, *Vibrio* can attach to broken corals, algae, and lime stone which in turn may be a source of *Vibrio* in the water (Rodrich, 1991). According to Barrow and Miller (1976) *V. parahaemolyticus* are a found more frequent in low coastal waters and estuaries than in deep water. The concentration of *Vibrio* in Jakarta Bay was lower than in waters off Riau (Hasan & Parlindungan 1996). These authors found an average concentration of $3.9 \cdot 10^6$ cfu 100 ml⁻¹. *Vibrio* spp. in Rupert Strait. WHO allows 300 MPN 100 g⁻¹ (Gosling, 1992), and Italian regulations prohibit concentration of more than 34 MPN 100 g⁻¹.

ACKNOWLEDGEMENTS

We wish to thank the people who assisted us during the laboratory and field work, and DANIDA for supporting the research through the TMMP.

REFERENCES

- Al Mossawi, M.J., M.H. Kadri, A.A. Salem & T.D. Chugh. 1983. The Use of Clams as Bio-indicator of Fecal Pollution in Seawater. In: Water, Air and Soil Pollution. D. Reidel Publishing Company. Kuwait. p: 257-263.
- Anonymous. 1998. Pengelolaan Basis Data Potensi Perairan Teluk Jakartadengan Menggunakan Sistem Informasi Geografis. Pusat Kajian Sumberdaya Pesisir dan Lautan. Institut Pertanian Bogor (Indonesian).
- AOAC. 1975. Official Methods of Analysis 12th Ed. 961 pp.
- APHA. 1976. Standard Methods for the Examination of Water and Wastewater, 14th Ed. APHA-AWWA-WPCF. Washington D.C. 1193 pp.
- Barnard, C.F, F. Gilbert & P. McGregor. 1993. Asking Questions in Biology: Design, Analysis and Presentation in Practical Work. Longman Scientific and Technical. London. 158 pp.
- Barrow, G.I. & D.C. Miller. 1976. *Vibrio parahaemolyticus* and Seafood. In: F.A Skinner and J.G. Carr, editors. Microbiology in Agriculture, Fisheries and Seafood. Academic Press. London. p: 181-195.
- Cook, D.W. 1991. Microbiology of Bivalve Mollusc Shellfish. In: D.R. Wardand C. Hackney, editors. Microbiology of Marine Food Product Van Nostrand Reinhol Publish. New York. p 19-39.
- Gosling, E. 1992. Systematic and Geographic Distribution of *Mytilus*. In: E. Gosling, editor. The Mussel *Mytilus*: Ecology, Physiology, Genetics and Culture. Elsevier. Amsterdam. p. 1-20
- Hasan, B. & A.K. Parlindungan. 1996. Isolasi Bakteri dan Indikator Organisme di Perairan Selat Rupert, Riau. Dalam: W.F. Maruf, D. Soedharma, D.G. Bengen, C.H. Buyung., Nurmansyah, B. Marhaeni, editor. Prosiding Seminar Hasil Ilmu Kelautan. Proyek Pengembangan Ilmu Kelautan. Jakarta: 1-9 (Indonesian).
- Highsmith, A.K. & S.A. Crow. 1992. Waterborne Disease. In: J. Ledenberg, editor. Encyclopedia of Microbiology Vol.

- 4 S-Z. Academy Press Inc. San Diego-New York-Boston-Sydney-Tokyo-Toronto p: 377-384.
- Rodrick, G.E. 1991. Indigenous Pathogens: Vibrionaceae, In: D.R. Ward & C. Hackney, editors. Microbiology of Marine Food Product Van Nostrand Reinhold Publish. New York p: 285-299.
- Ruyitno & S.S. Thayib. 1994. Kondisi Bakteriologis Perairan Teluk Jakarta. Dalam: S.S Thayib dan D.H Kunarso, editor. Prosiding Seminar Pemantauan Pencemaran Laut, Jakarta 07-09 Februari 1994. Pusat Pengembangan Penelitian Oseanologi LIPI. Jakarta. hal: 63-63 (Indonesian).
- Standar Nasional Indonesia. 1991b. Metode Pengujian Mikrobiologi Produk Perikanan: Penentuan *Escherichia coli*; *Salmonella* spp. Pusat Standarisasi dan Akreditasi. Badan Agribisnis Departemen Pertanian. Jakarta. 748 hal (Indonesian).
- Thayib, S.S. 1991. Mikrobiologi Laut. dalam: D.H. Kunarso & Ruyitno, editors. Status Pencemaran laut di Indonesia dan Teknik. Pusat Penelitiandan Pengembangan Oseanologi LIPI. Jakarta. hal: 61-69 (Indonesian).
- Thayib, S.S. & J.T.D Listiawati. 1977. Perairan Teluk Jakarta dengan Mikroorganismenya yang Bersifat Menyakit. Dalam: M. Hutomo, K. Romimohtarto & Burhanidin, editors. Teluk Jakarta: Sumberdaya, Sifat Oseanologi serta Permasalahannya. Proyek Penelitian Potensi Sumberdaya Ekonomi LON-LIPI. Jakarta. hal: 233-244 (Indonesian).
- Yates, M.P. 1992. Bio-monitoring of Environmental Contamination. In: J.Ledenberg, editor. Encyclopedia of Microbiology Vol 1 A-C. Academy Press Inc. San Diego-New York-Boston-Sydney-Tokyo-Toronto 321 pp.